

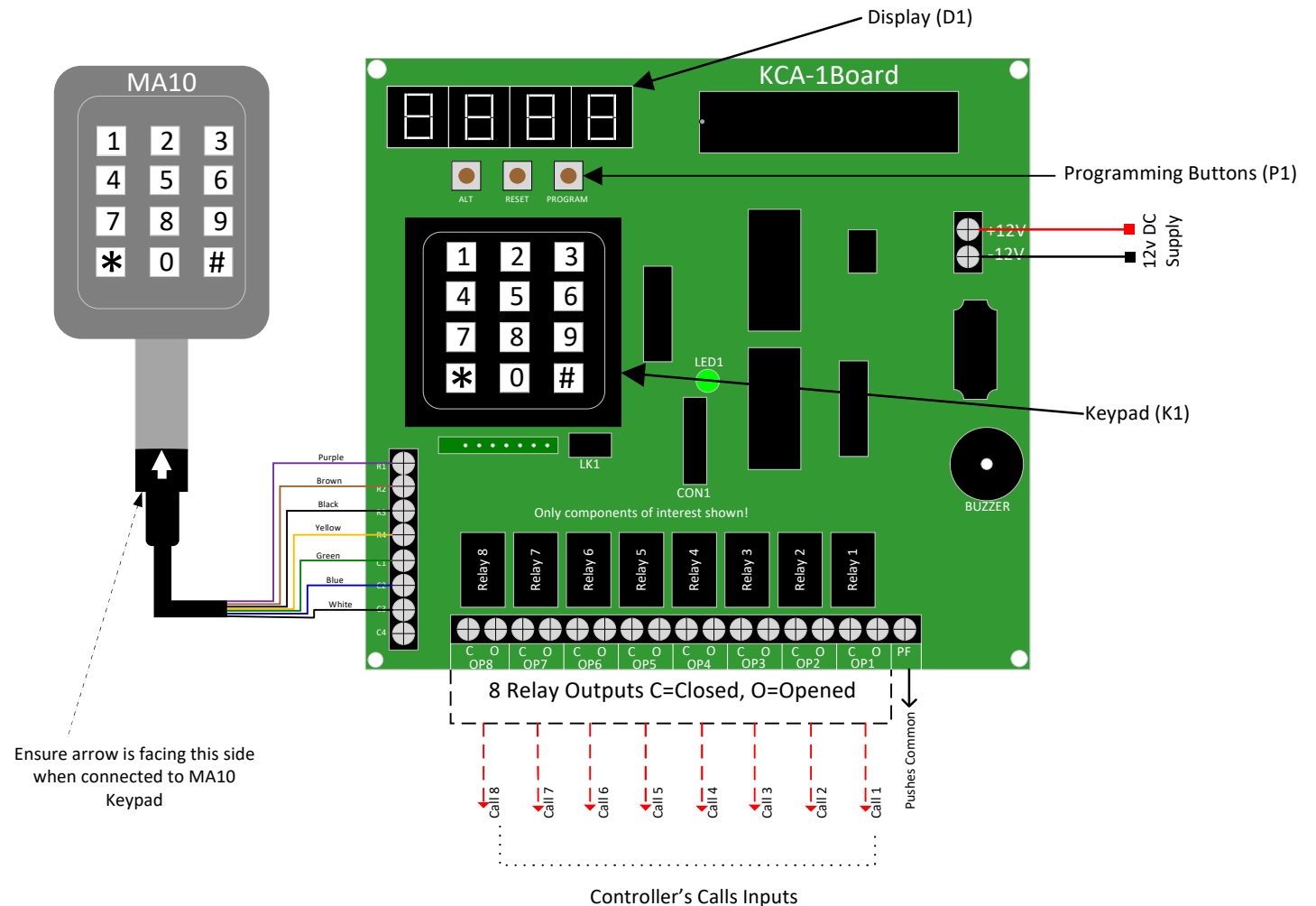
KEY CODE ACCESS (8 WAY)

The KCA1 has been designed to be installed on top of the car. MA10 keypad is installed in the lift car. Eight individual codes can be stored, each code will energize one of the eight relays. These relays can be configured to block a bank of buttons or individual button. The keypad of KCA1 (K1) is used for programming and re-programming access codes.

The display (D1) in the unit will display the code you are entering and its location to one of the relays. The output relays can be programmed to be energized for a few seconds after a code has been entered. This can be used to put a call directly or liven the appropriate push. The relays can also be configured to be energized by correct code and de-energized by entering the same code again.

MA10 KEYPAD

The stainless steel keypad is vandal resistant and IP rated. This unit can be mounted into a COP (Car operating panel) or a stainless steel face plate whereby it can be fitted to existing lift installations.



Programming Instructions:-

1. Hold Down the Reset and Program button momentarily.
2. Release the Reset button then the Program button.
3. The display will show **(PROG)**.
4. Press # key until the display reads **(d0o1)**.
5. When **(d0o1)** is displayed, press # again.
6. Now it will display the access code for output one (Default set to **1111**).
7. To change the code, press "Alt" button then enter a new four digit code, the display will flash **(d0o1)**.

8. Press the # key and the new code will be displayed
9. Press the # key again the display will show **(d0o2)**
10. Press # again and the code for output two on the decoder is display (Factory set to **d0o2**), to alter this go to step 5 and repeat.
11. To Exit program mode at any time press "*" key.